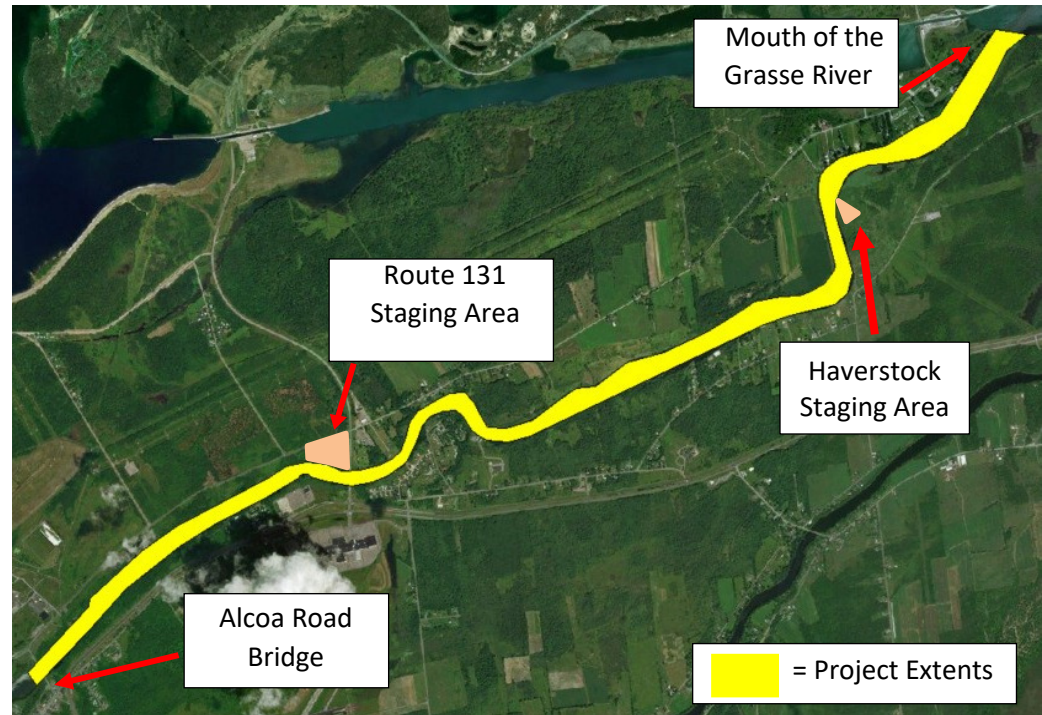


# Grasse River Remediation Project Operations

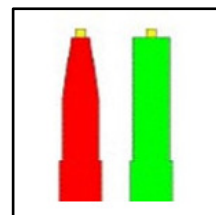
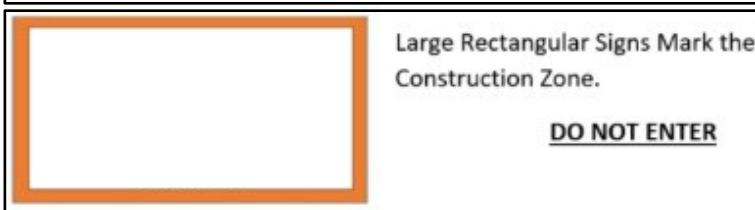
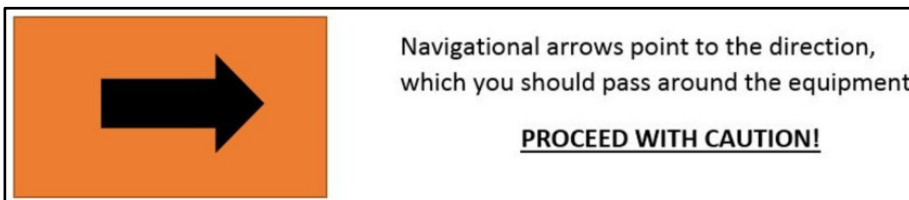


## 2021 GRASSE RIVER REMEDIATION ACTIVITIES WILL INCLUDE THE FOLLOWING:

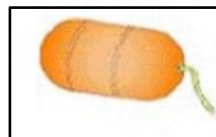
- Capping operations from Alcoa Rd. Bridge to the mouth of the Grasse River.
- Transportation of materials by Barge and Pushboat.
- A near shore pipeline, which will be used transport clean capping material, will be submerged underwater when in use, with a few floating sections. The pipeline will be marked with orange and white buoys and have designated crossing areas with green and red buoys in the river channel (See attached figures).
- Loading and offloading of materials along the frontage of the Route 131 Staging Area.
- Haverstock Property will be used to pump material to working barges.
- General support of water-based construction operations by boat.
- Operations to be conducted during day and night hours.
- Moored equipment will display Coast Guard approved lighting at night.



Please note the signage and markers listed below that are placed on the river for your safety during the remediation. If you have questions, please call [Sue Flynn 315-764-4400](tel:315-764-4400).



Lighted green and red buoys mark channels for safe crossing.  
**CROSS BETWEEN GREEN and RED BUOYS!**



Orange or white buoys mark hydraulic pipeline and potential submerged debris.  
**PROCEED WITH CAUTION!**



# Typical Pipeline Layout

